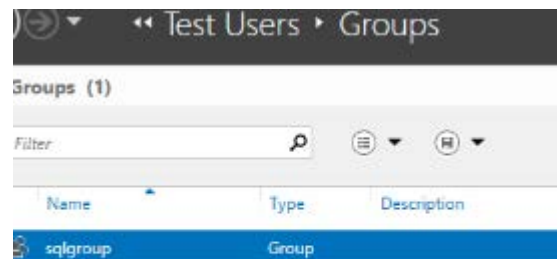


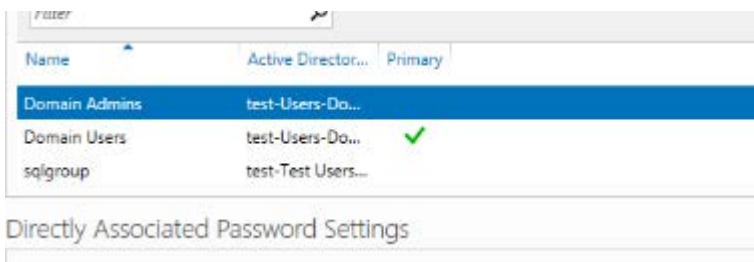
## Homework #5: Active Directory and Group Policy Objects

- This is an individual assignment, and is worth 20 points.
- The due date is Thursday, March 1<sup>st</sup>.
- You need to provide your answers to the “Homework #5 – Tasks.docx” file. Change the file name following the naming convention suggested below.
- Naming convention is as follows: homework, underscore, last name, first initial, and extension (e.g., Homework #5\_Img.docx).
- Do not copy any of the sample screenshots provided as illustrations.

- (**Task 1**) Show in a screenshot that the three domain users (sqluser1, sqluser2, sqluser3) are created in SQLUsers OU. Also show in a screenshot that **sqlgroup** is created in the **Groups** OU.



- (**Task 2**) Go to sqluser1 properties and show in a screenshot that sqluser1 is a member of **Domain Admins** and **sqlgroup**.

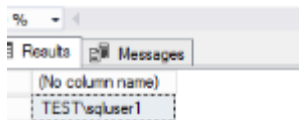


- (**Task 3**) Run the following query on SQL Server and show in a screenshot that you indeed logged-on with sqluser1.

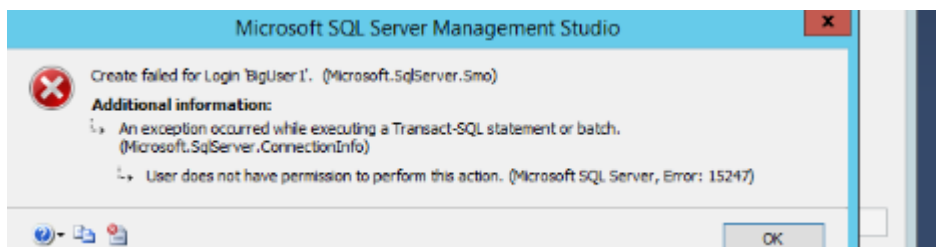
```

LQuery1.sql - Wl...TEST\sqluser1 (55))*
SELECT USER_NAME( )

```



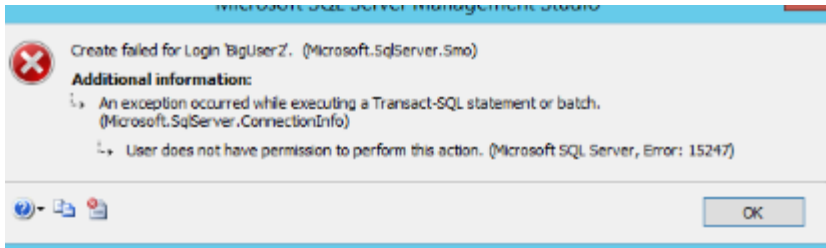
- (**Task 4**) Logon to SQL Server. Create a login “**BigUser1**”. Select **SQL Server authentication**. Enter the password “1234567”, and show in a screenshot that the login cannot be created. Explain why?



The login cannot be created because the policy enforcing password complexity is enabled. Therefore, 1234567 is too simple and doesn't meet the requirements.

- (**Task 5**) Create a login “**BigUser2**”. Select **SQL Server authentication**. Enter the password “1234567”, and show in a screenshot that the login is created. Explain why this was possible. Explain also the relationship between the GPO and the SQL Server password policy.

Maximum password age	42 days
Minimum password age	1 days
Minimum password length	7 characters
Password must meet complexity requirements	Disabled
Store passwords using reversible encryption	Disabled



This should work because I disabled the group policy that required the password meet the complexity requirements, which it would not have if it was enabled. The GPO enforces policies on objects within the operating system, whereas the sql server policy only enforces it when that object is logging onto SQL server.